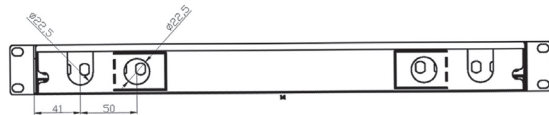
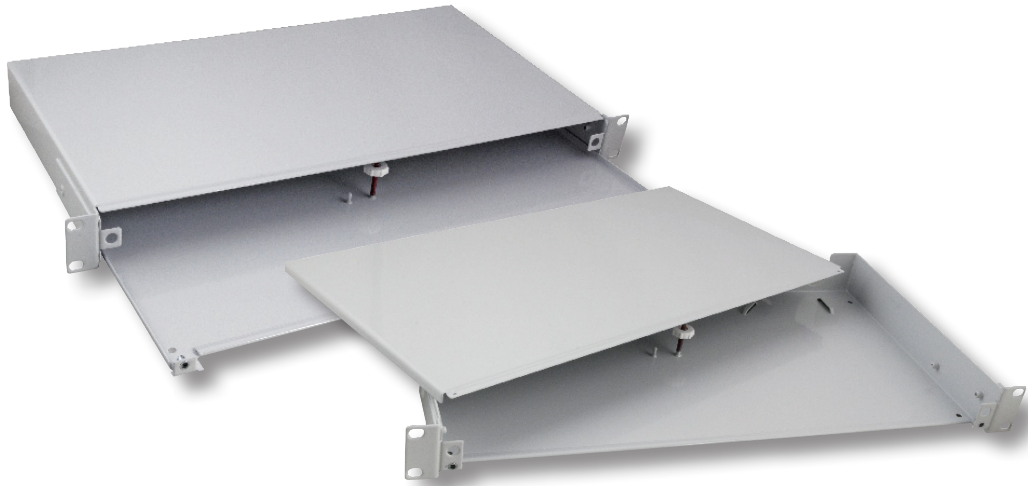


Splicebox 19" 1U without Front Panel, RAL7035
freely combinable with all front panels



- Unassembled, without front panel
- Steel sheet 1.5 mm
- Colour RAL7035, light grey
- With cover nut (Article 80555.1) for max. 4 Splice cassettes
- Cable entry backsided, prepared for PG16/M20
- Dimensions (W) x (H) x (D) 483 x 44.5 x 244 mm

Art.-No.	Type
53600.0	Splice box 19" 1HE, sliding unit, unassembled
53601.0	Splice box 19" 1HE, slideless unit, unassembled

RoHS
compliant

Created MN	Date 28.09.09
Last rev. BT	Date 13.09.12

Splice box 19" 1U
without Front panel

53600.0 ; 53601.0

File: 53600.0.pdf

